

DRSP SERIES

DRAGFLOW
ULTIMATE EFFICIENCY



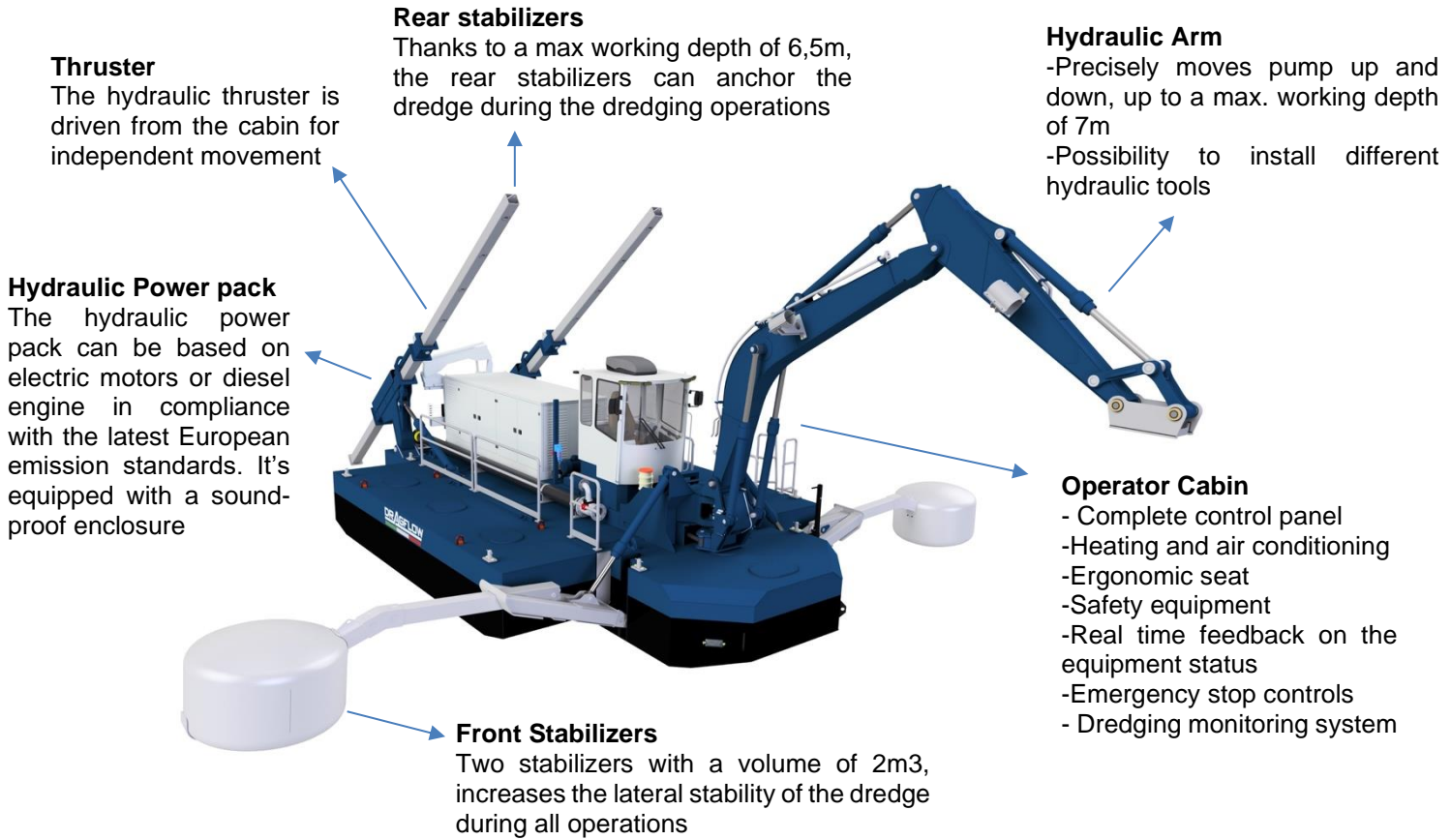
DRSP (Multi-Purpose series) represents a step over on approach of dredging technique. The extreme mobility in any kind of swamp, together with the **full floatability**, allow to reach the most remote locations otherwise impossible to get with any other equipment.

Pumping capacity up to 600-800 m³/h with delivery distance up to 1500 meters or more can make possible to perform works with the highest productivity ever. The combination of such equipment with the DRAGFLOW dredging technology makes the **DRSP unbeatable in terms of efficiency and durability**.

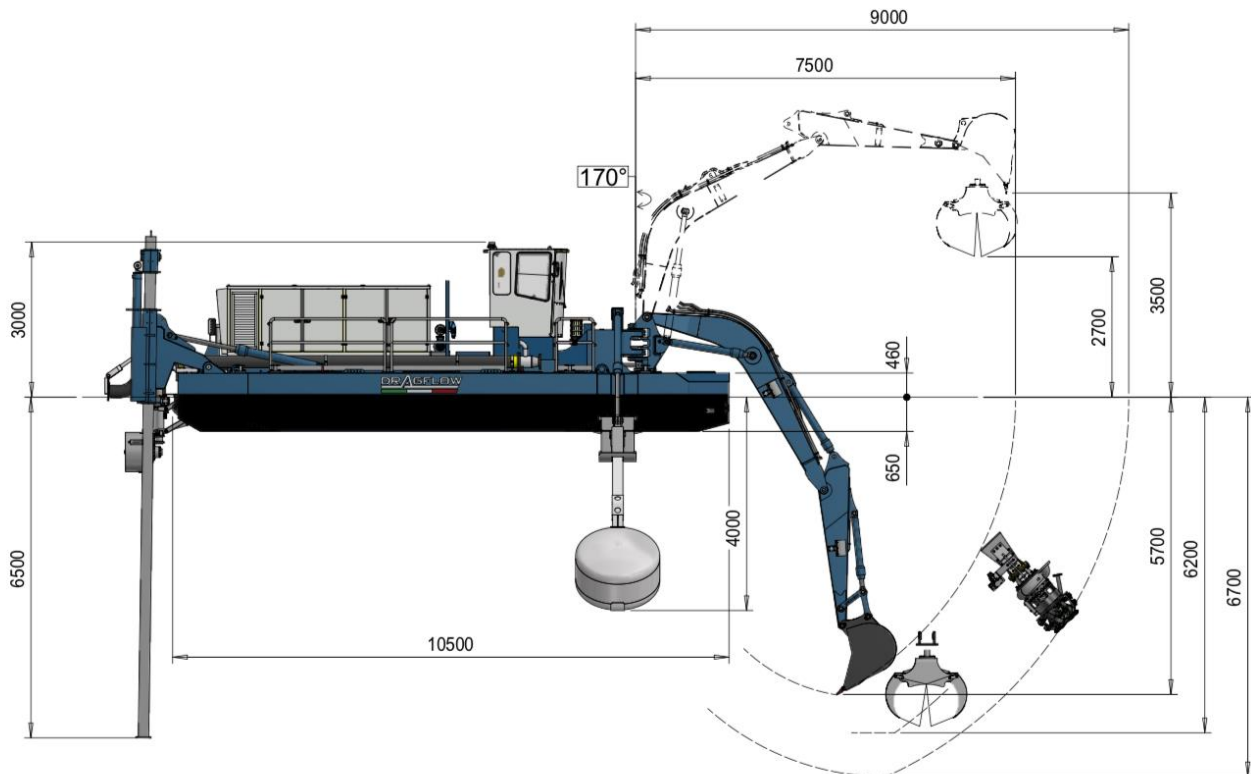
Main characteristics of DRSP

- Multipurpose machine capable of performing a wide variety of operation through the versatility provided by the hydraulic arm and the ability to move independently over any type of surface.
- Wide range of tools that can be used with the dredge, such as dredging pumps, rakes, buckets, pile drivers and more
- Independent movement both on land and water
- High stability thanks to the additional side floaters

THE DREDGE

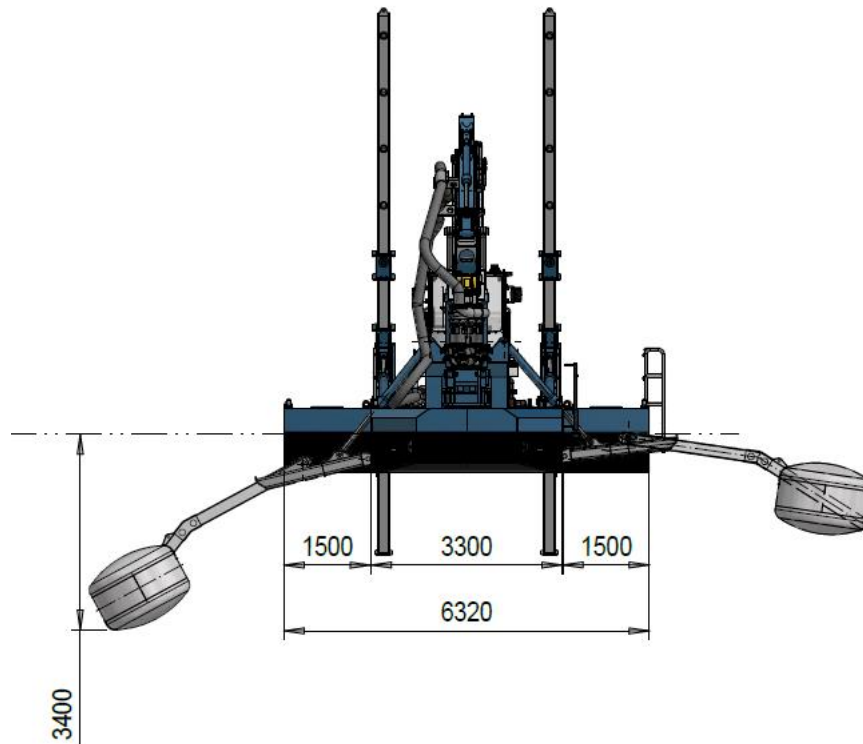
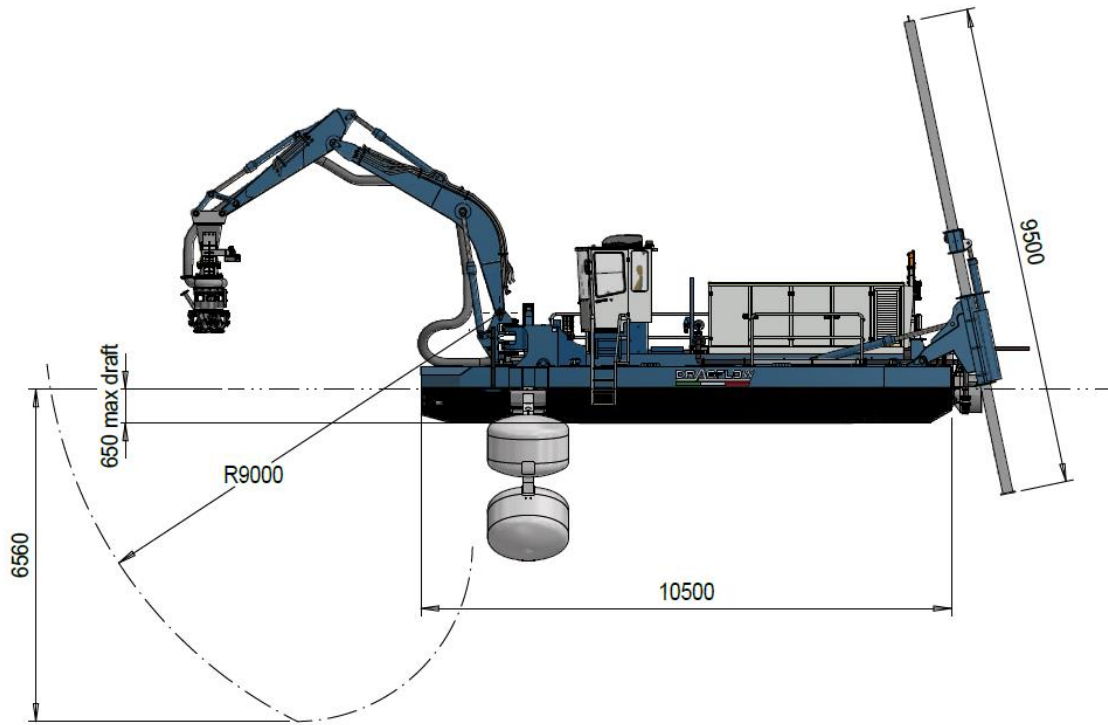


Working Depth Chart



Different tools are used for different applications, making the DRSP dredge a multipurpose machine suitable for complex projects

General Arrangement and Dimensions



PUMPS

HY85/160 (LONG DISTANCE)

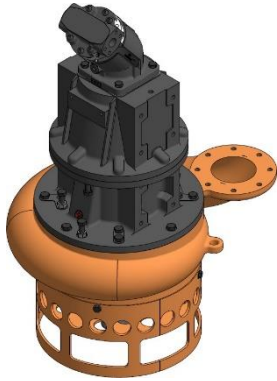
Max capacity: 400 m³/h
Max head: 63 m
Discharge diameter (DN): 200/250
Max solid handling: 60mm
Delivery distance: up to 1500 m

HYDRAULIC MOTOR

Motor displacement [cc - (cu in)] 160 - (9.8)
Power [kW-HP] 120-165

MATERIALS

Casing Spheroidal cast iron EN-GJS-800-2 (EN 1563)
Wear parts High chrome EN-GJN-HV600 (XCr18) (EN 12513)



HY85/160HC (HIGH CAPACITY)

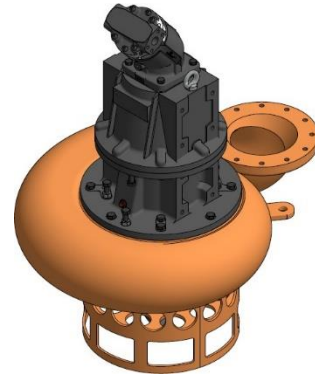
Max capacity: 800 m³/h
Max head: 40 m
Discharge diameter (DN): 250/300
Max solid handling: 90mm

HYDRAULIC MOTOR

Motor displacement [cc - (cu in)] 160 - (9.8)
Power [kW-HP] 120-165

MATERIALS

Casing Spheroidal cast iron EN-GJS-800-2 (EN 1563)
Wear parts High chrome EN-GJN-HV600 (XCr18) (EN 12513)



PUMP CUTTING TOOLS



Side Cutters EXHY20

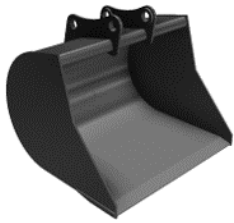
- Hydraulic radial piston motors
- Motor displacement: 700cc
- Replaceable teeth
- Oil requirement: 35 l/min each
- Cutters Weight: 500 kg each
- Speed: 30 RPM. - 50 RPM
- Torque: 314 kgf.m each
- Rotates in both directions



DTM Cutter Head

- Hydraulic radial piston motor
- Motor displacement: 1240cc
- Replaceable teeth
- Oil requirement: 40 l/min
- Cutter Weight: 350 kg each
- Speed: 30 RPM
- Torque: 540 kgf.m
- Tooth system materials: harder and tougher alloy steel

ATTACHMENTS



Backhoe Bucket (1000 lt)

- Cap. SAE. 1000 lt
- Weight: 830 kg
- Double base in S355
- Without teeth



Backhoe Bucket (600 lt)

- N. 4 teeth type CAT J300
- Cap. SAE. 600 lt
- Weight: 580 kg
- Double base in S355



Bucket Rake

- N. 11 teeth type CAT J300
- Weight: 1200 kg
- Distance between teeth 200mm approx.



Grab Attachment

- Static force: 2 tons
- Weight: 300 kg
- Force: 1.7 tons
- Surface: 0.35m²



Vibro Pile-driver Attachment

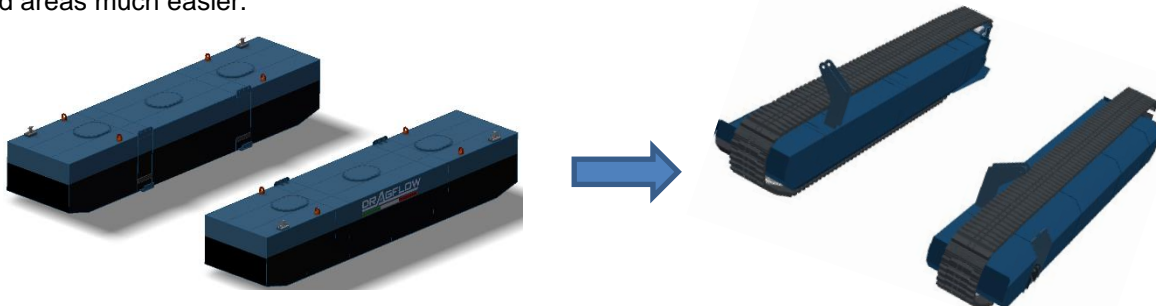
- Working pressure: 150bar
- Max Force; 12000kg
- Vibration frequency: 2300
- Weight: 1200 kg

TAKE THE DRSP DREDGE TO THE NEXT LEVEL

NEED ADDITIONAL MOBILITY FOR YOUR PROJECT? No problem.

Dragflow has developed a unique tracked undercarriage system that can be installed as an additional accessory on the DRSP dredges to achieve a level of freedom never seen before.

The Dragflow tracked undercarriage **replaces** the standard lateral floaters of the dredge and makes movement over complicated areas much easier.



With this upgrade, the DRSP dredges achieves an extra level of independence for those particularly harsh environments.

The tracked module can be added to new and existing DRSP dredges for an extra mobility boost.



ENGINE

Iveco, Caterpillar, Volvo (other brands are available on request)

- Turbo charged, diesel engine
- Air-water radiator cooled
- Flywheel power at 2000 rpm from 168 kW to 260kW
- Fuel tank capacity. 1000 L
- Electric system 24V
- Batteries 2x170 Ah

HYDRAULICS

- One axial piston pump for dredging pump and propeller - operating pressure max. 320 bar
- One axial piston pump for digging and stabilizers - operating pressure max. 280 bar
- One axial piston pump dedicated to the cutter head - operating pressure max. 250 bar

EXCAVATOR

- Swinging angle 170°
- Break-out force from bucket cylinder 83 kN
- Digging force from arm cylinder 47 kN
- Lifting capacity at max. reach 24,5 kN
- Quickly changeable attachments
- Max boom length 6.9 m

HULL

- One-piece hull divided into 7 watertight compartments
- Corrosion resistant painting outside and inside
- Protective skid bars on underside
- Colored, signal lights for dredging and navigation

MATERIAL QUALITY

- Complete traceability of steel and construction materials
- Primary brand paintings

CABIN

- Modern cabin with excellent visibility
- 10 working lights

ANCHORING

- Independent anchoring and work movement without assisting vessels, winches or wire-cables
- Two front stabilizers max length 5,5 m
- Two rear tilting stabilizers max length 9,5 m
- Length can be variable, depending on the project

MOBILITY

- Self-loading and self-unloading to/from a trailer
- Moves independently in and out of water
- Self-propelled
- Amphibious in all work modes

COMPANY CERTIFICATES

- Quality certificate ISO 9001
- Environmental certificate ISO 14001

TRANSPORT DIMENSIONS AND WEIGHT

Transport length without boom	11,00 m
Transport length with boom	16,00 m
Transport width	3,30 m
Transport height	3,70 m
Transport weight (for the central module)	ca 25 t